

# ELGIN ACADEMY

*Prelim Examination 2005 / 2006*

## MATHEMATICS

### Standard Grade - Foundation Level

### Paper I

Time Allowed - 20 minutes

---

First name and initials

Surname

Class

Teacher

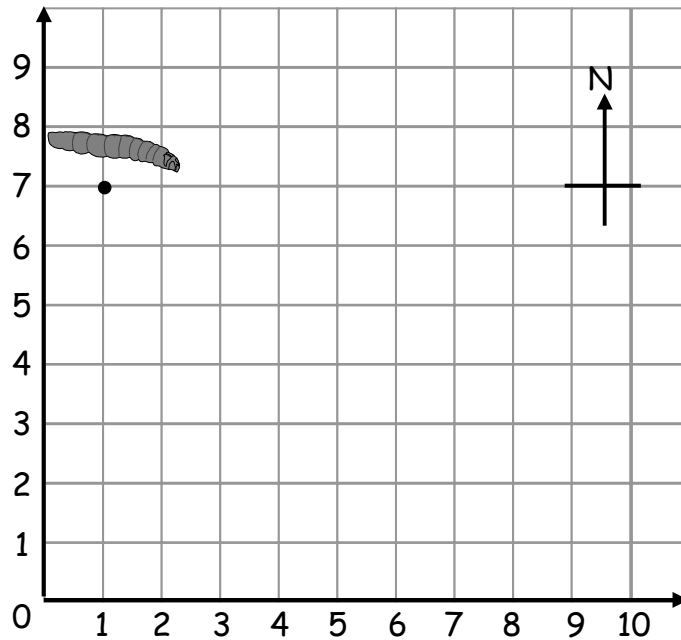
Read Carefully

1. Answer as many questions as you can.
2. Write your answers in the spaces provided .
3. Full credit will be given only where the solution contains appropriate working.
4. **You may not use a calculator**



5. A slug is crawling along a piece of garden netting to reach a lettuce.

The net is represented by a coordinate grid in the diagram where each square represents 10cm.

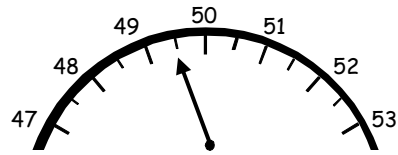


To get to the lettuce, the slug starts at point (1, 7) and crawls 50cm south, 40cm east and 10cm north.

- (a) Show the slug's path on the diagram above. (1)
  
- (b) Write down the coordinates of the position of the lettuce. (2)
  
- (c) If the slug was able to crawl in a straight line back to its starting position, in what direction would it have to go? (1)


6. Jenna was trying to lose some weight for her wedding. She weighed herself at the beginning of June and found she weighed 52.3kg.

The scale shows what she weighed at the end of June.

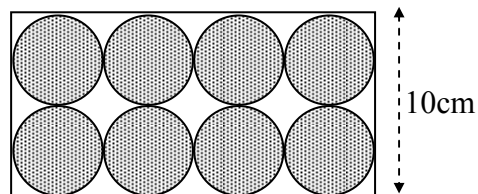


How much weight did Jenna lose during the month of June?

(3)

7. Tea light candles are arranged in a tray as shown in the diagram.

The tray is 10cm wide.



(a) Write down the length of the tray.

(2)

(b) Calculate the area of the top of the tray.

(2)

8. On an outward bound course the participants had to take part in 3 different activities – one in the morning, one in the afternoon and one in the evening.

The activities on offer were:

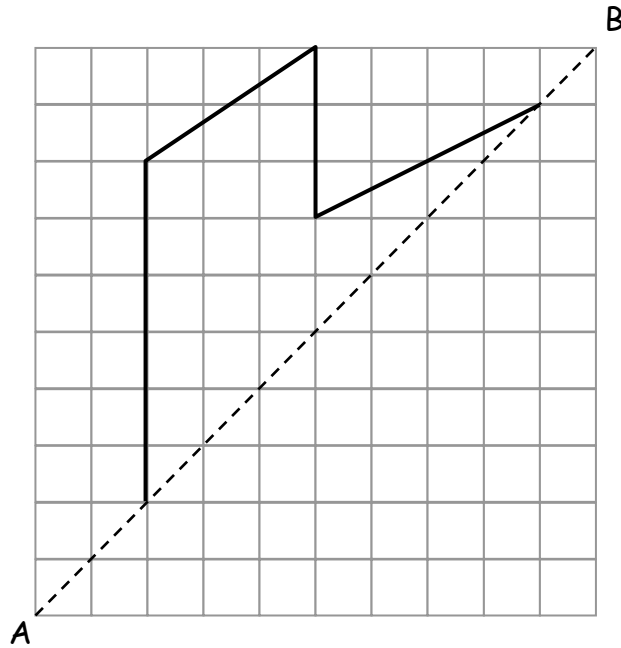
MORNING:	Swimming in the loch.	(SL)
	Mountaineering	(M)
AFTERNOON:	Cross country running	(CCR)
	Canoeing	(C)
	Map-making	(MM)
EVENING:	Midnight hike	(MH)
	Barbeque	(BBQ)

Complete this table to show 6 different ways that this could be done.

One way has been given and you should give 6 more.

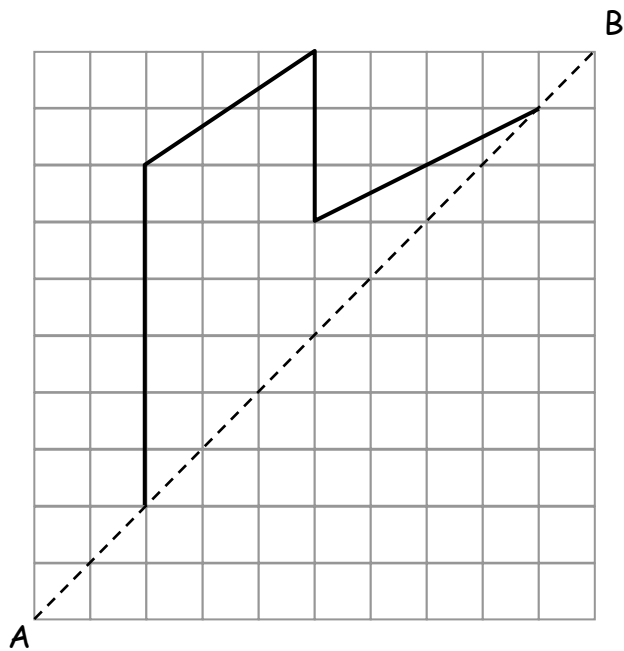
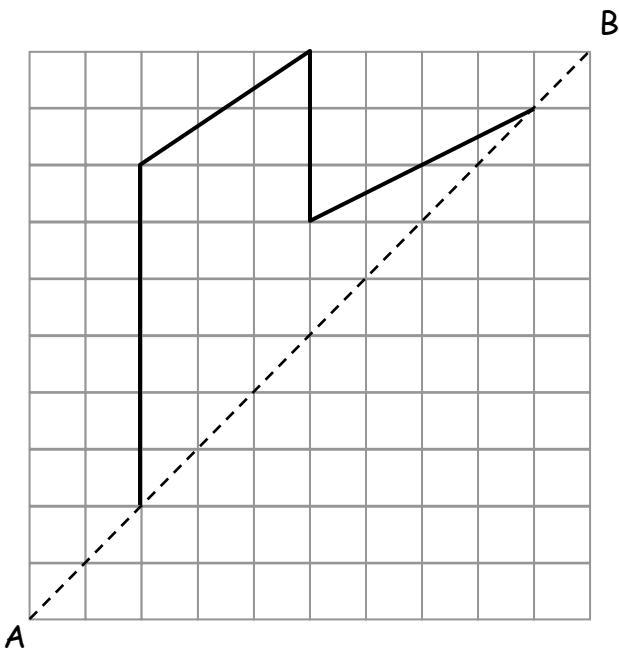
MORNING	AFTERNOON	EVENING
SL	CCR	MH

9. Complete the diagram below so that the line AB is an axis of symmetry.



(3)

Spare grids for this question



END OF QUESTION PAPER